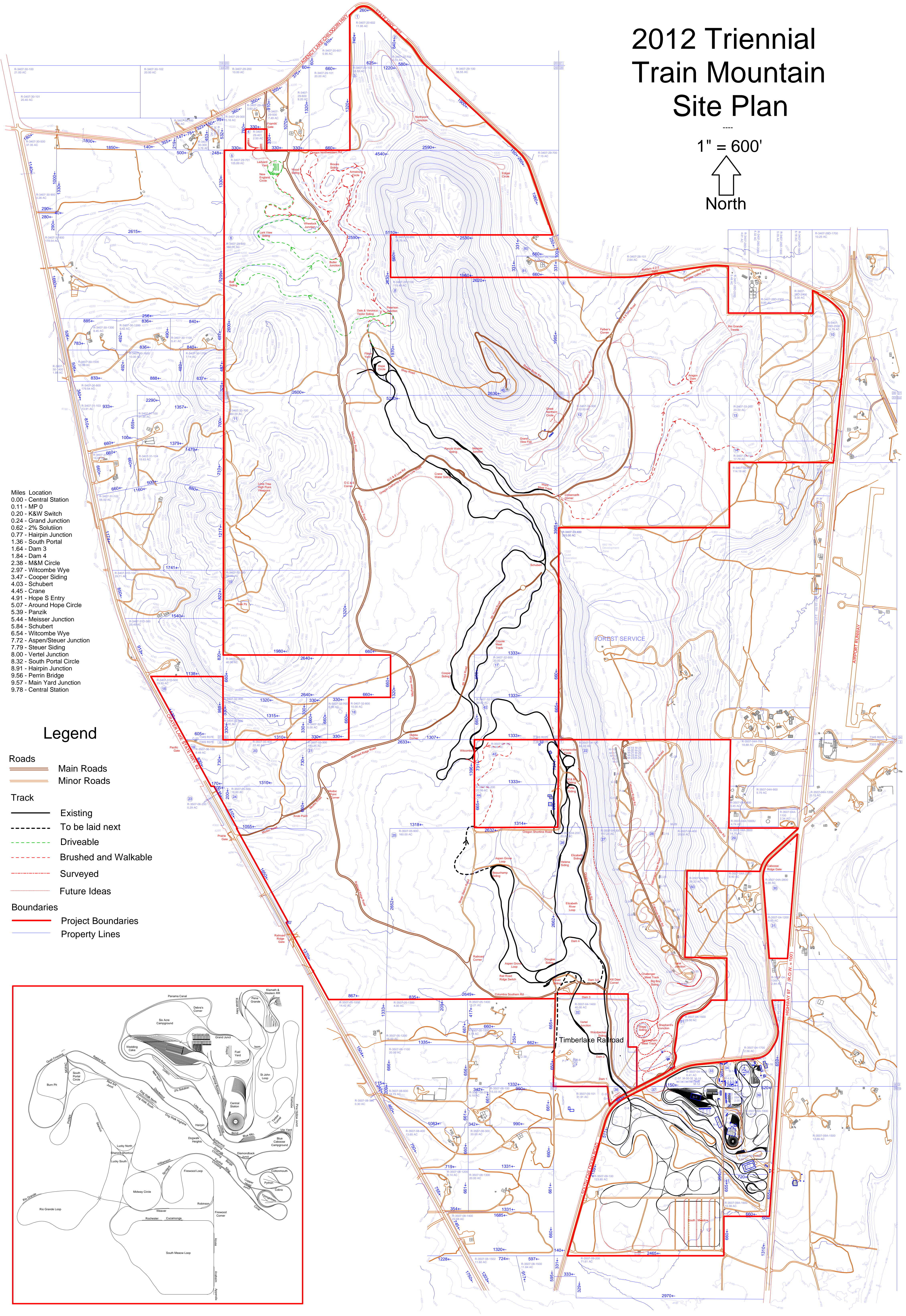
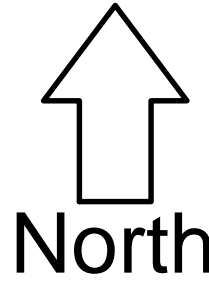


# 2012 Triennial Train Mountain Site Plan

1" = 600'



- Miles Location
- 0.00 - Central Station
  - 0.11 - MP 0
  - 0.20 - K&W Switch
  - 0.24 - Grand Junction
  - 0.62 - 2% Solution
  - 0.77 - Hairpin Junction
  - 1.36 - South Portal
  - 1.64 - Dam 3
  - 1.84 - Dam 4
  - 2.36 - M&M Circle
  - 2.97 - Witcombe Wye
  - 3.47 - Cooper Siding
  - 4.03 - Schubert
  - 4.45 - Crane
  - 4.91 - Hope S Entry
  - 5.07 - Around Hope Circle
  - 5.39 - Panzik
  - 5.44 - Meisser Junction
  - 5.84 - Schubert
  - 6.54 - Witcombe Wye
  - 7.72 - Aspen/Steuer Junction
  - 7.79 - Steuer Siding
  - 8.00 - Vertel Junction
  - 8.32 - South Portal Circle
  - 8.91 - Hairpin Junction
  - 9.56 - Perrin Bridge
  - 9.57 - Main Yard Junction
  - 9.78 - Central Station

## Legend

- Roads**
- Main Roads
  - Minor Roads
- Track**
- Existing
  - - - To be laid next
  - - - Driveable
  - - - Brushed and Walkable
  - - - Surveyed
  - - - Future Ideas
- Boundaries**
- Project Boundaries
  - Property Lines

