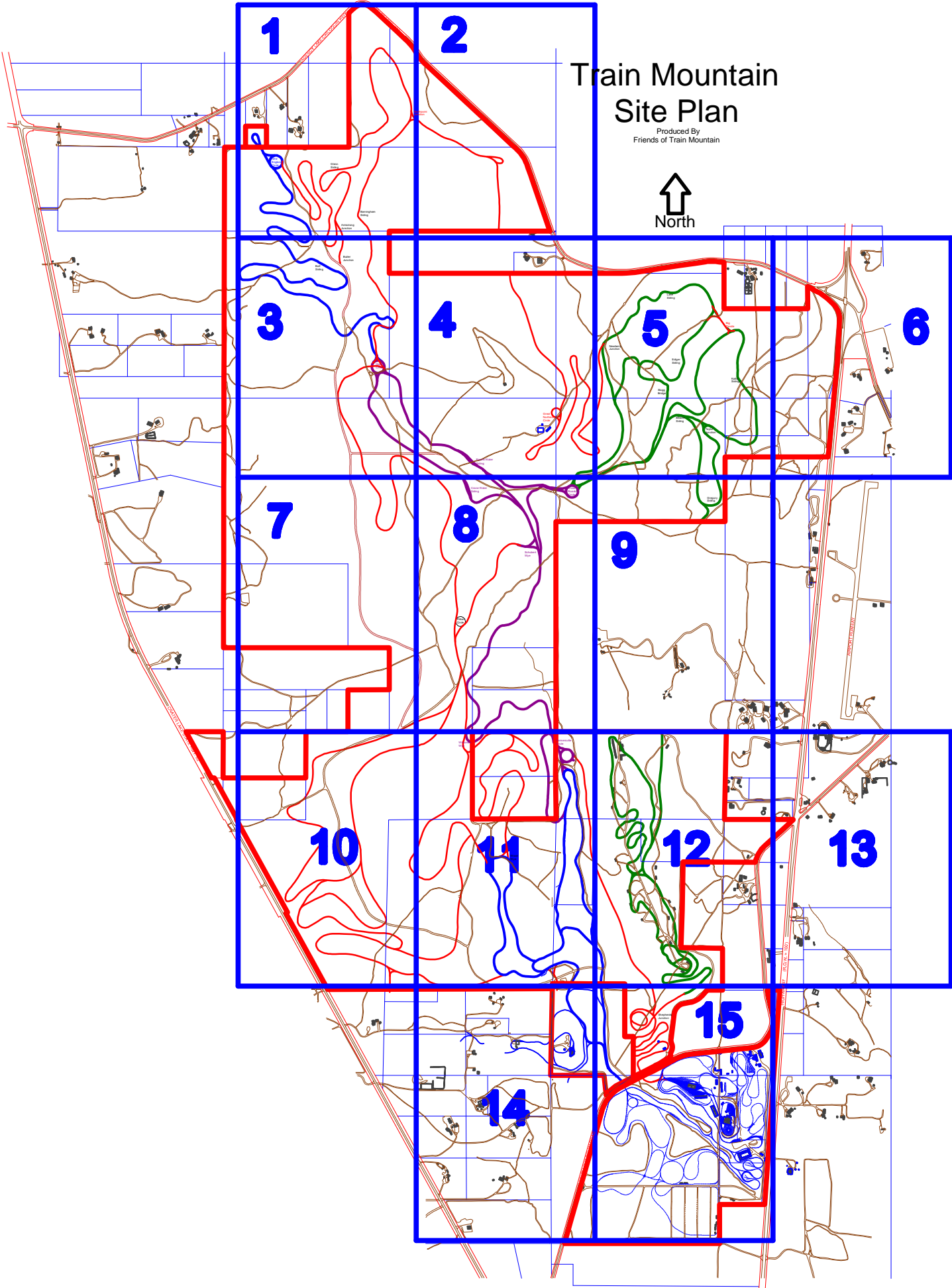


Train Mountain Site Plan

Produced By
Friends of Train Mountain

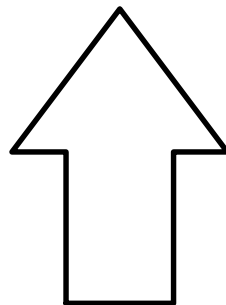


Train Mountain Site Plan

Produced By
Friends of Train Mountain

December 2, 2008

1" = 400'







North



Legend

Roads

-  Main Roads
-  Minor Roads whose use is to be minimized
-  ReSeeded Trails not to be driven on
-  Closed Roads to be permanently removed

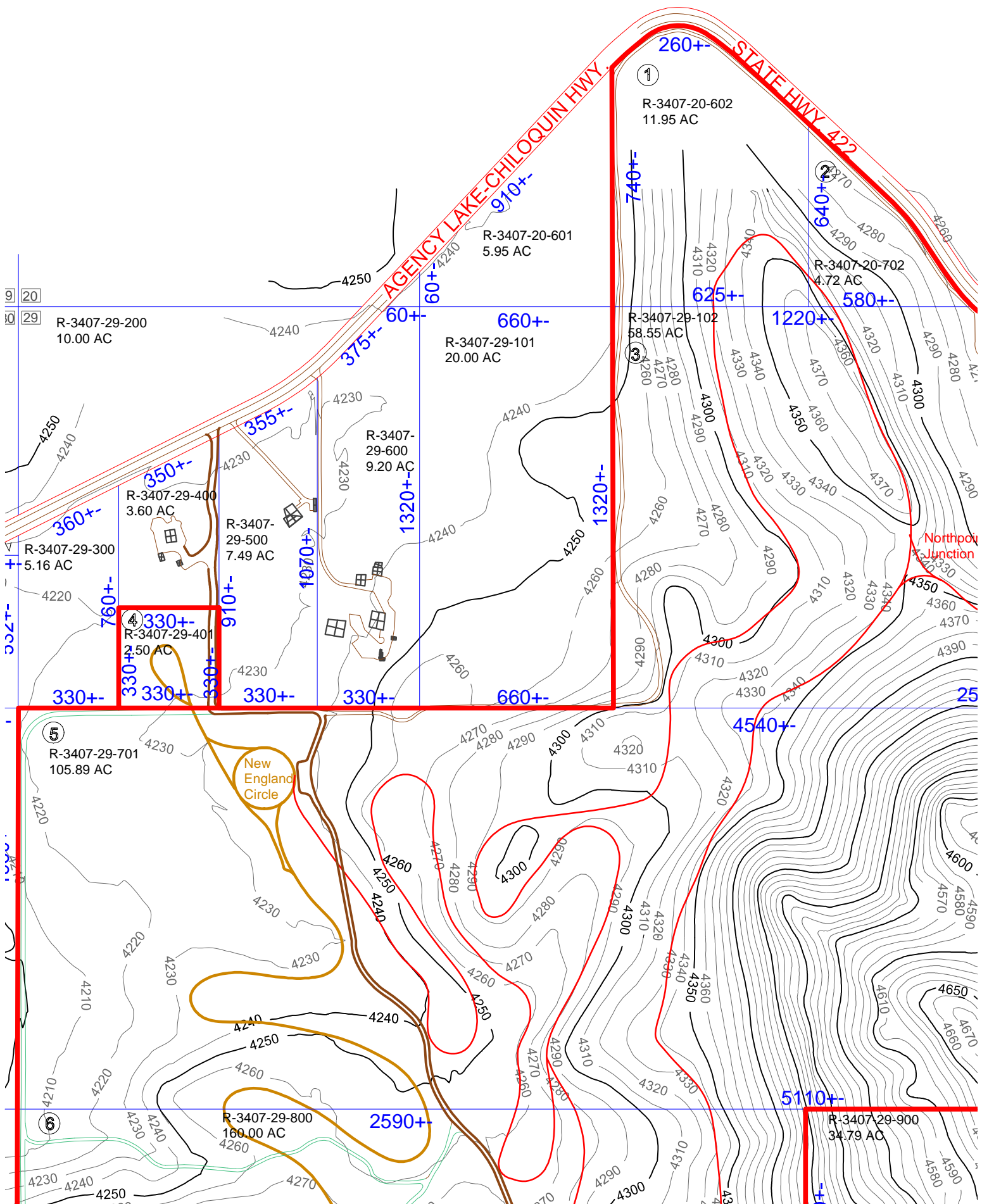
Track

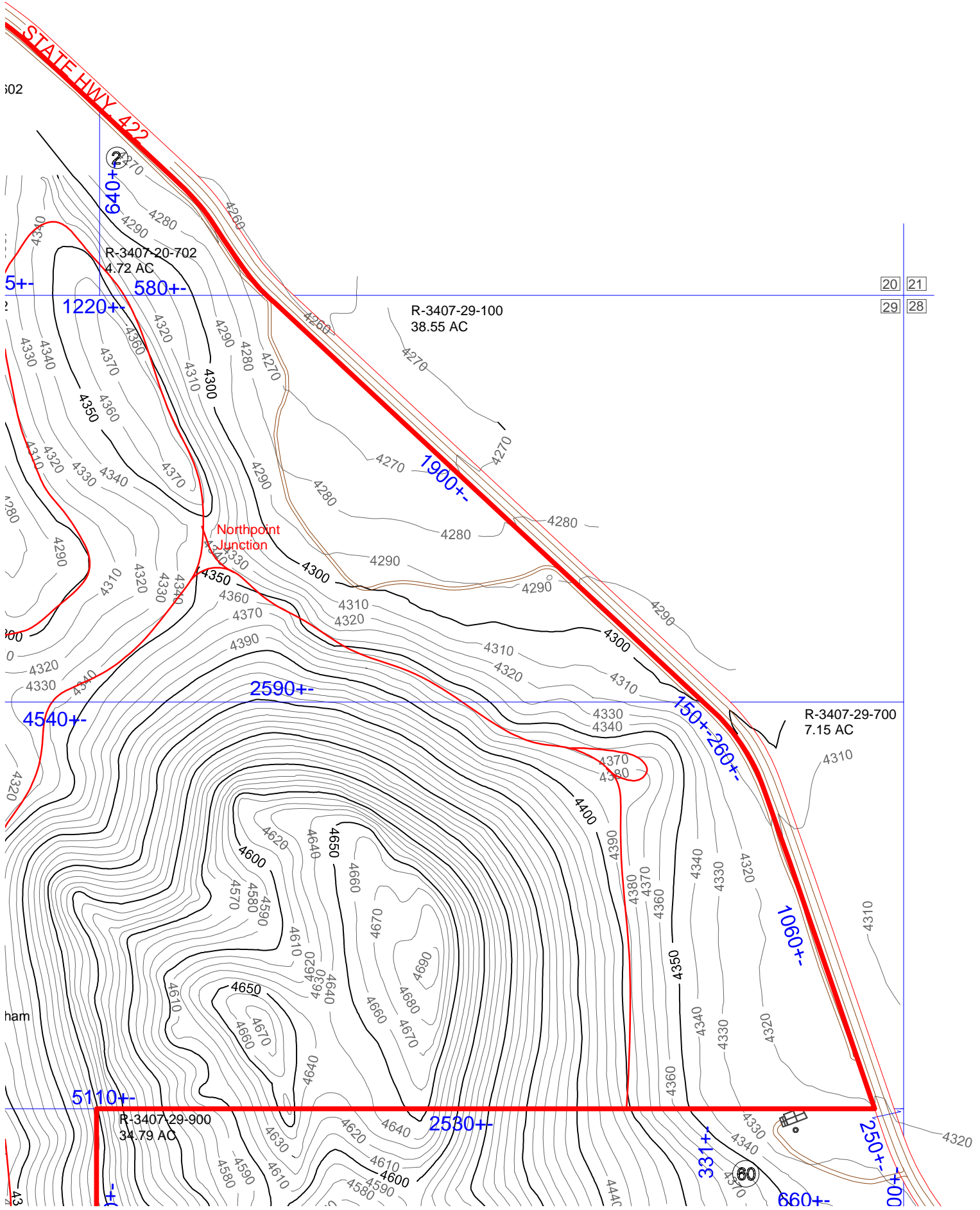
-  Existing Tracks
-  2008 Track
-  2009 Track
-  Future Track
-  Other Track Authorized by Klamath County
-  Track Licensed by Timberlake Railroad
-  Private Track

Boundaries

-  Project Boundaries
-  Property Lines

Lines will not show if layer is turned off





102

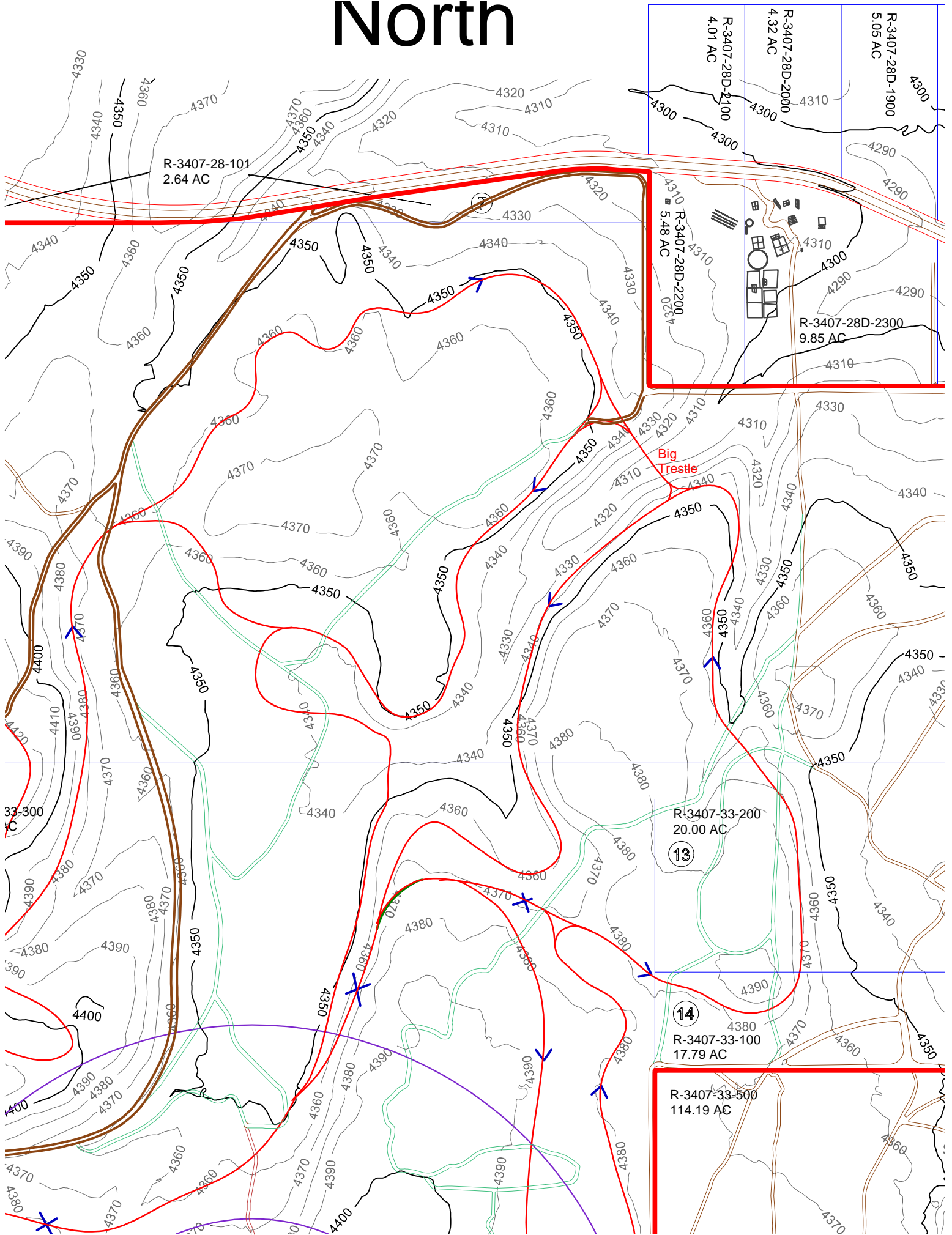
20 21

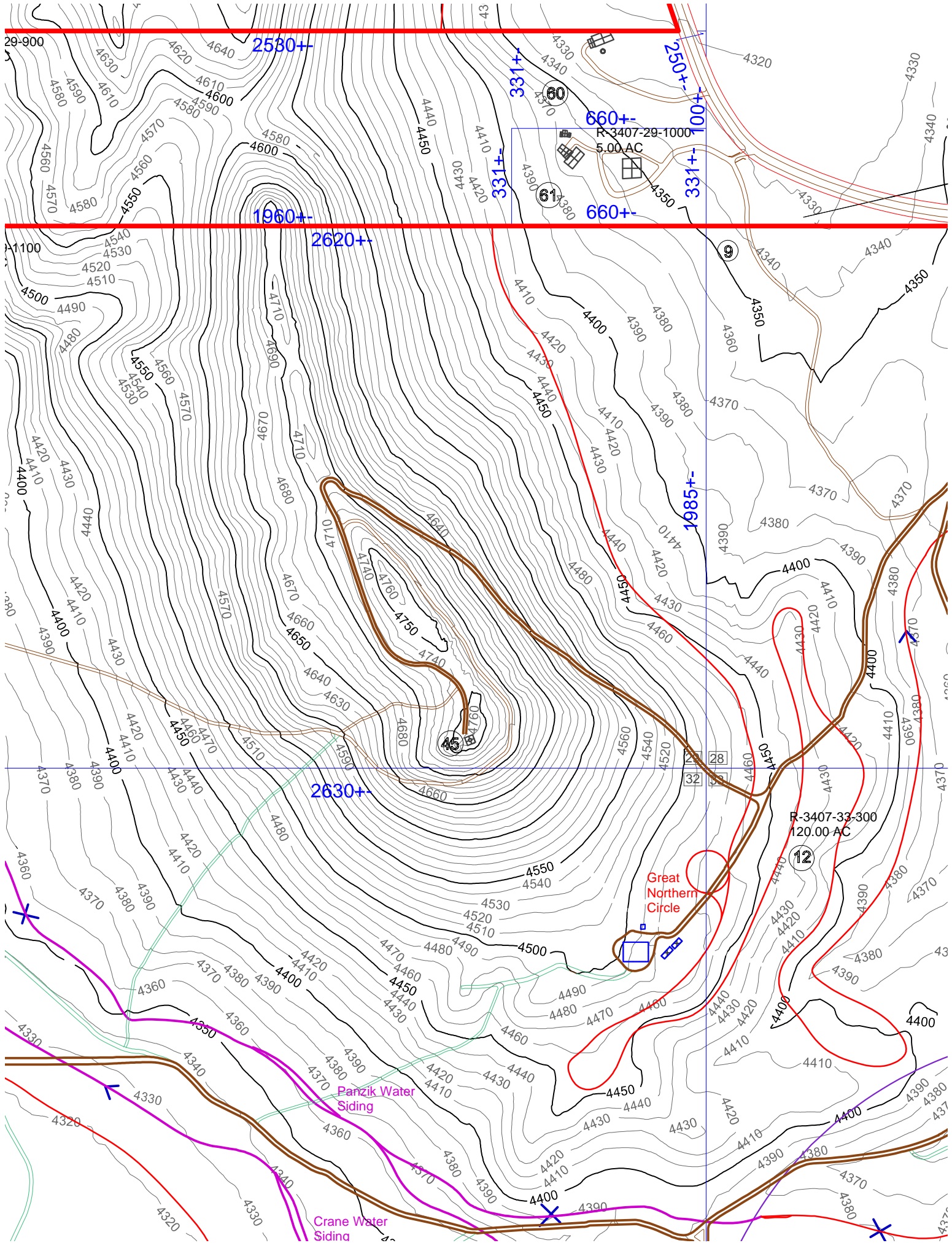
29 28

ham

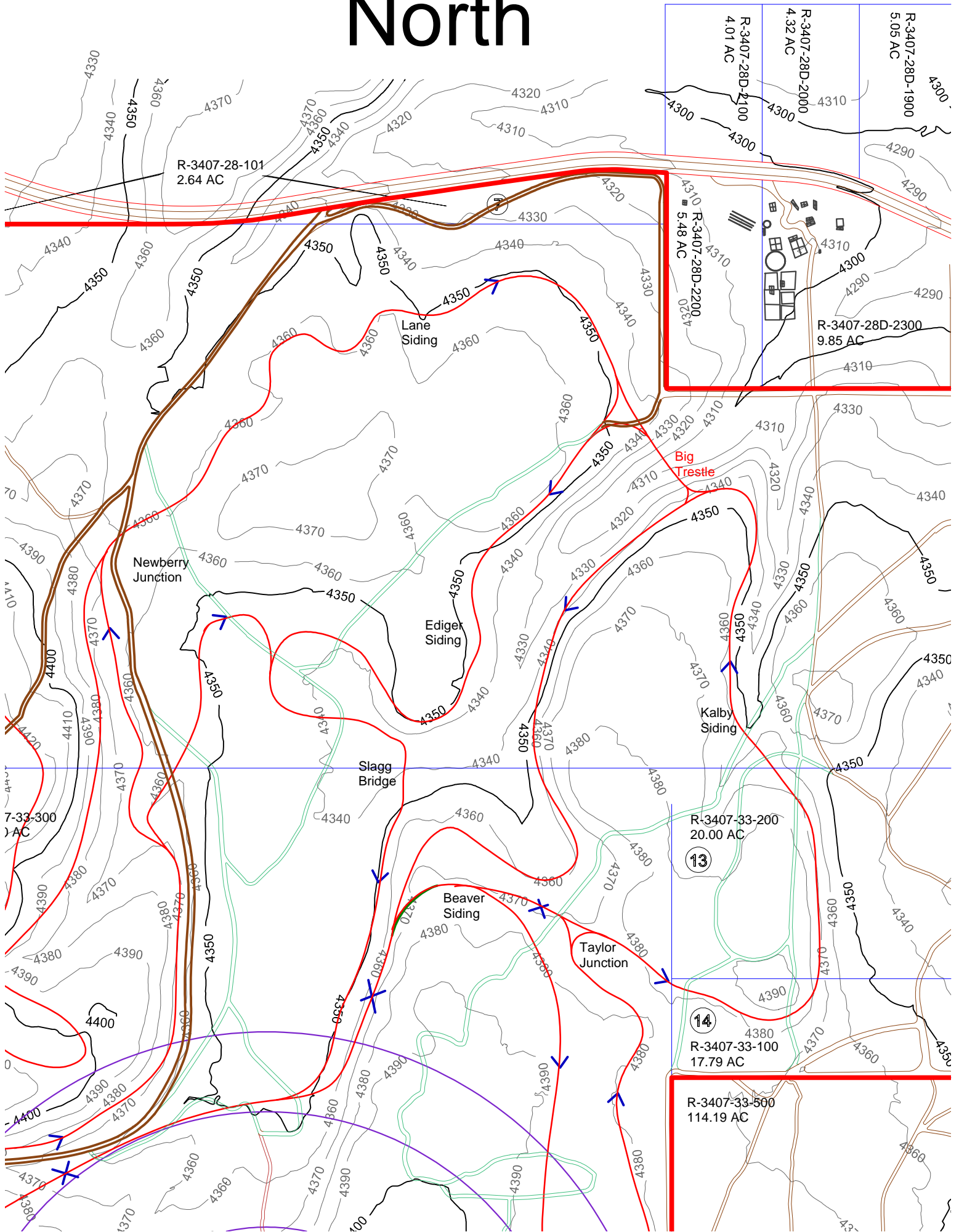
43

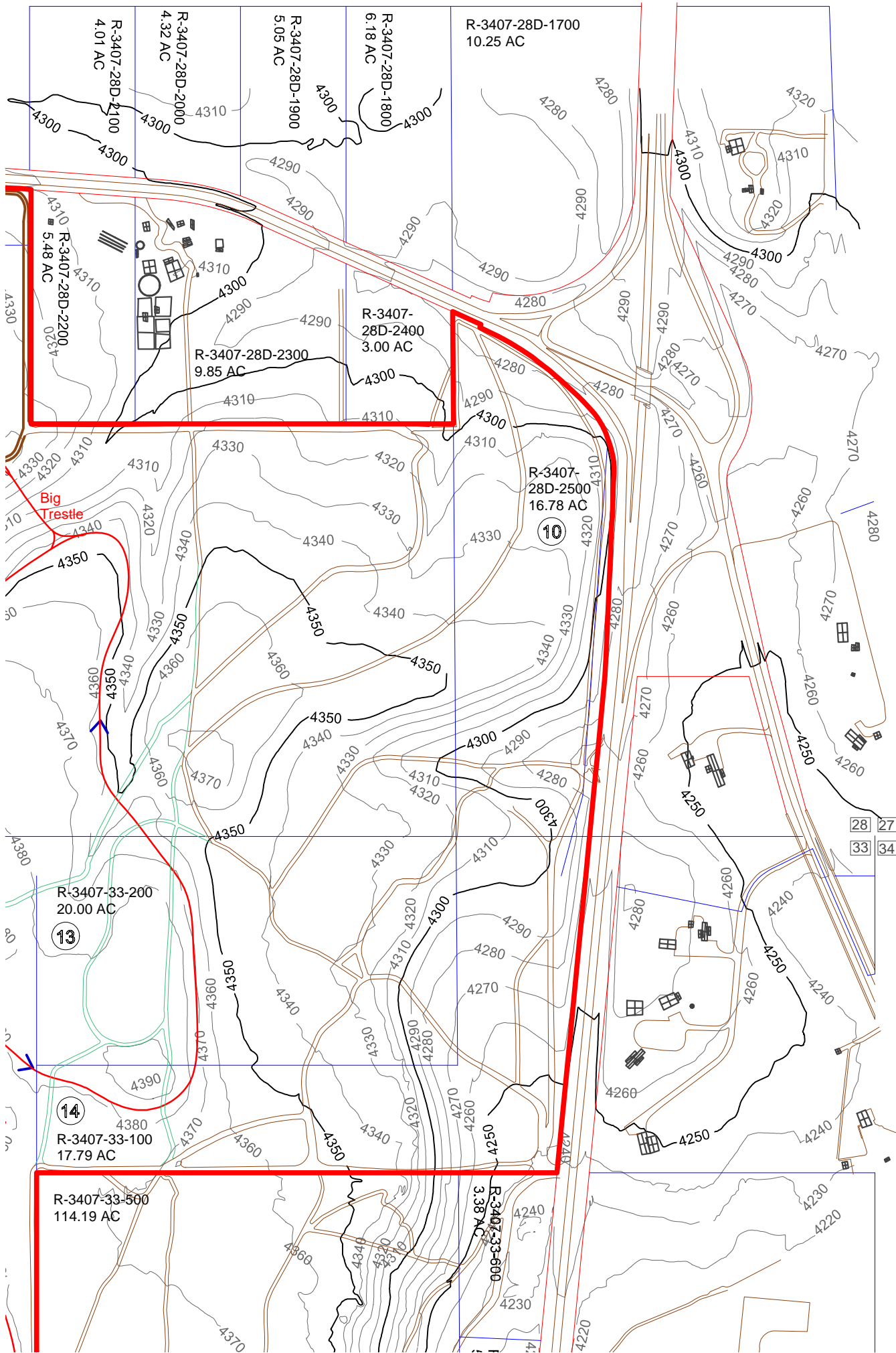
North

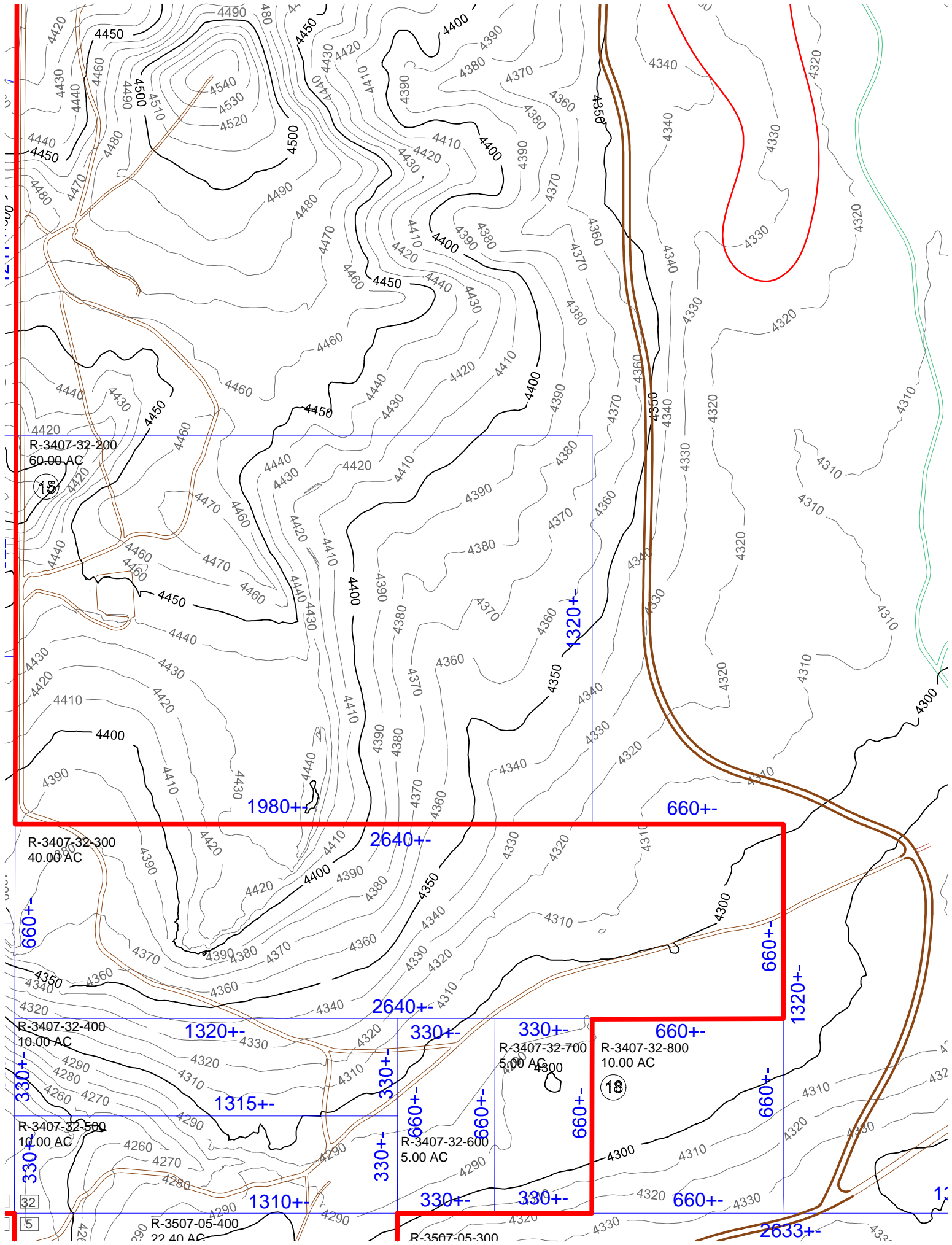


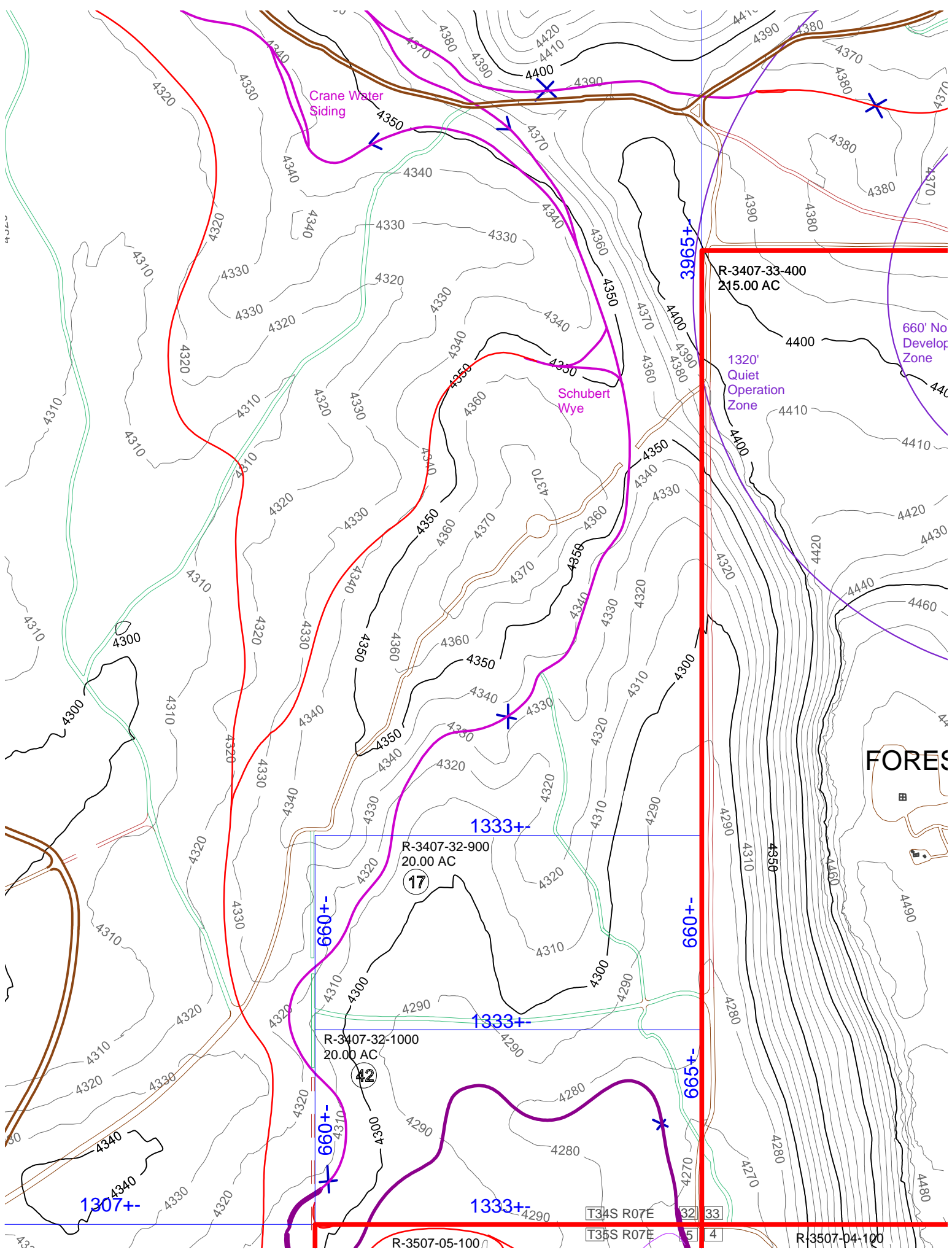


North









Crane Water Siding

Schubert Wye

R-3407-33-400
215.00 AC

1320'
Quiet
Operation
Zone

660'
No
Develop
Zone

R-3407-32-900
20.00 AC
17

R-3407-32-1000
20.00 AC
42

R-3507-05-100

R-3507-04-100

FOREST

1307+-

660+-

1333+-

1333+-

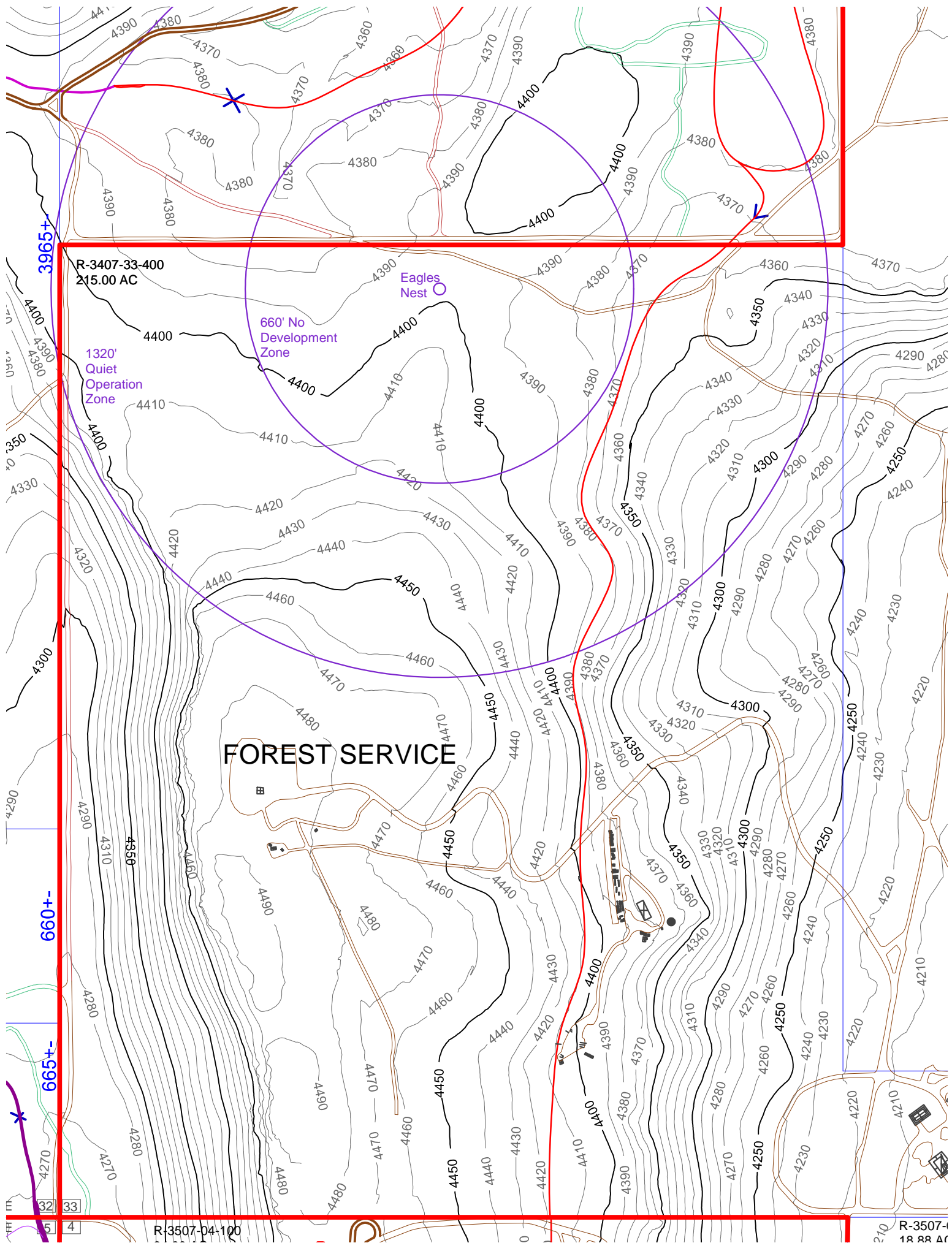
1333+-

3965+-

660+-

665+-

T34S R07E 32 33
T35S R07E 35 34



R-3407-33-400
215.00 AC

Eagles Nest

660' No Development Zone

1320' Quiet Operation Zone

FOREST SERVICE

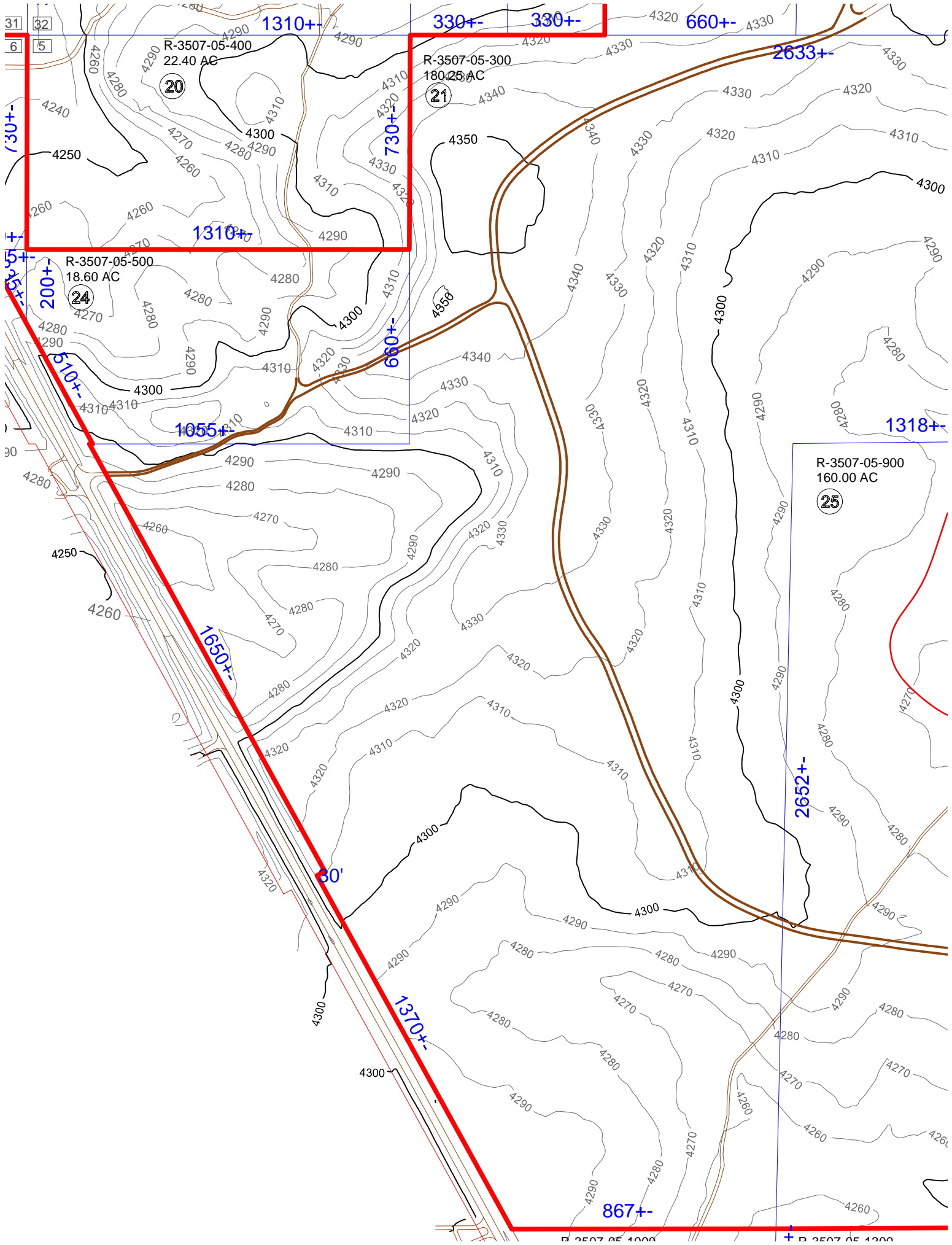
3965+

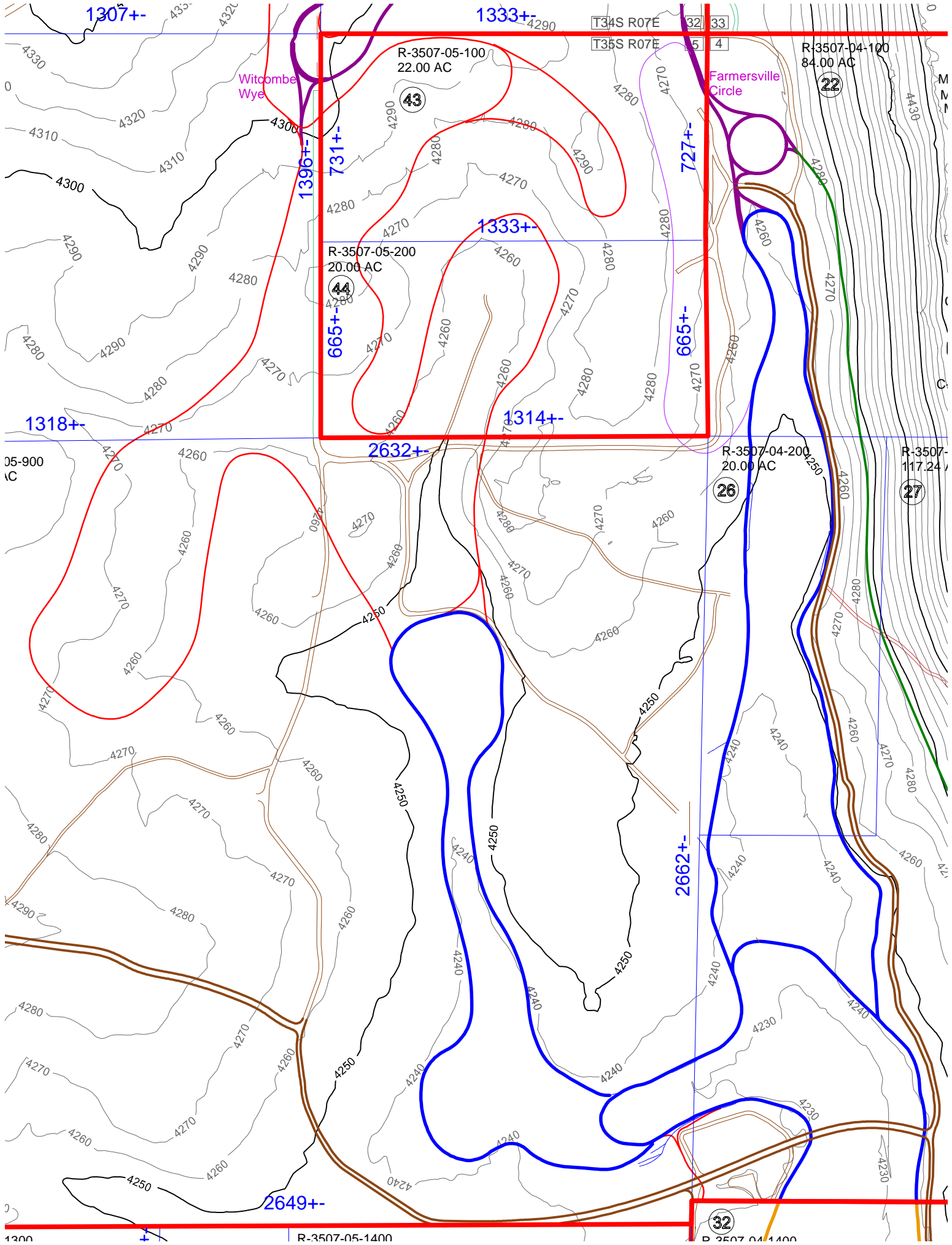
660+-

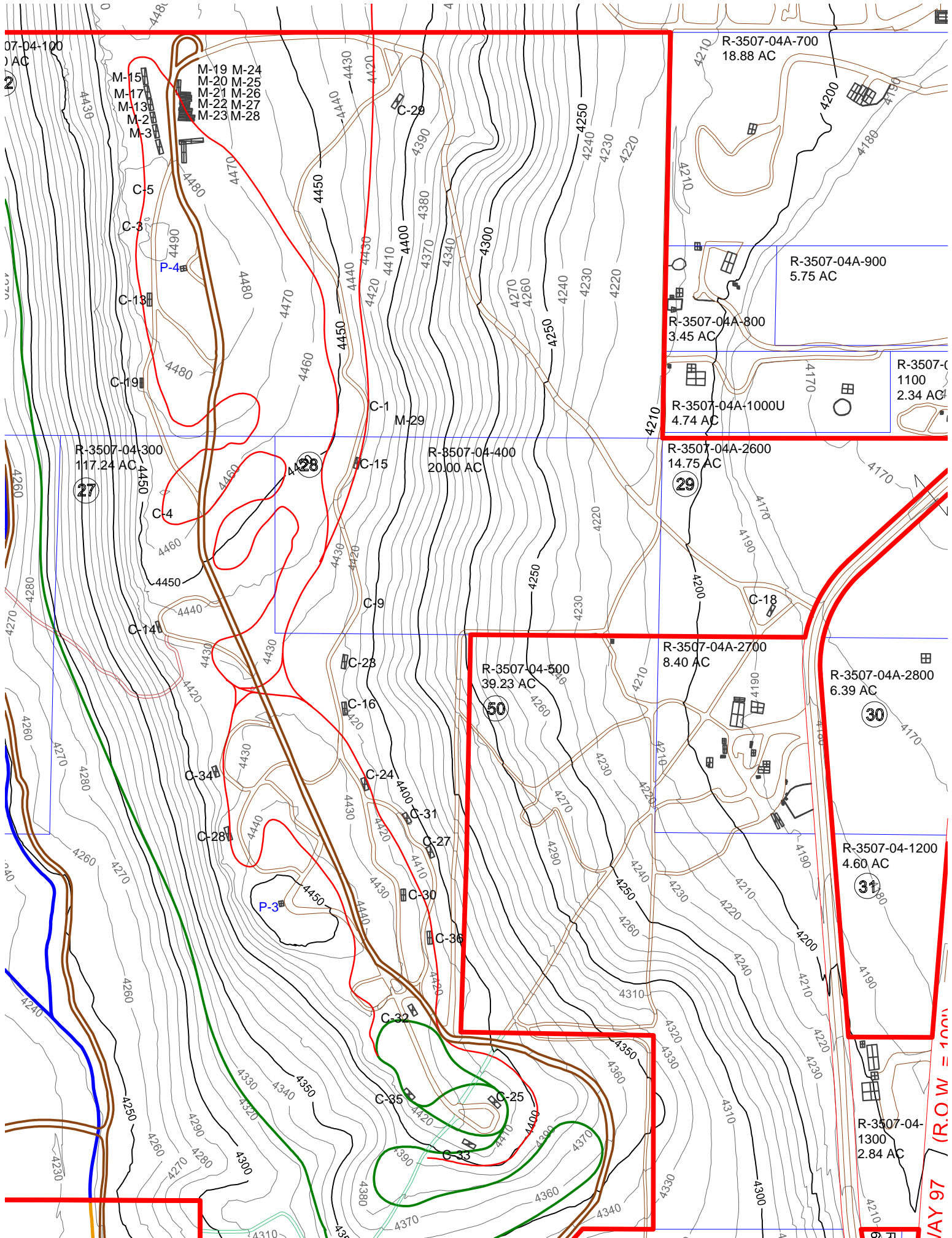
665+-

R-3507-04-100

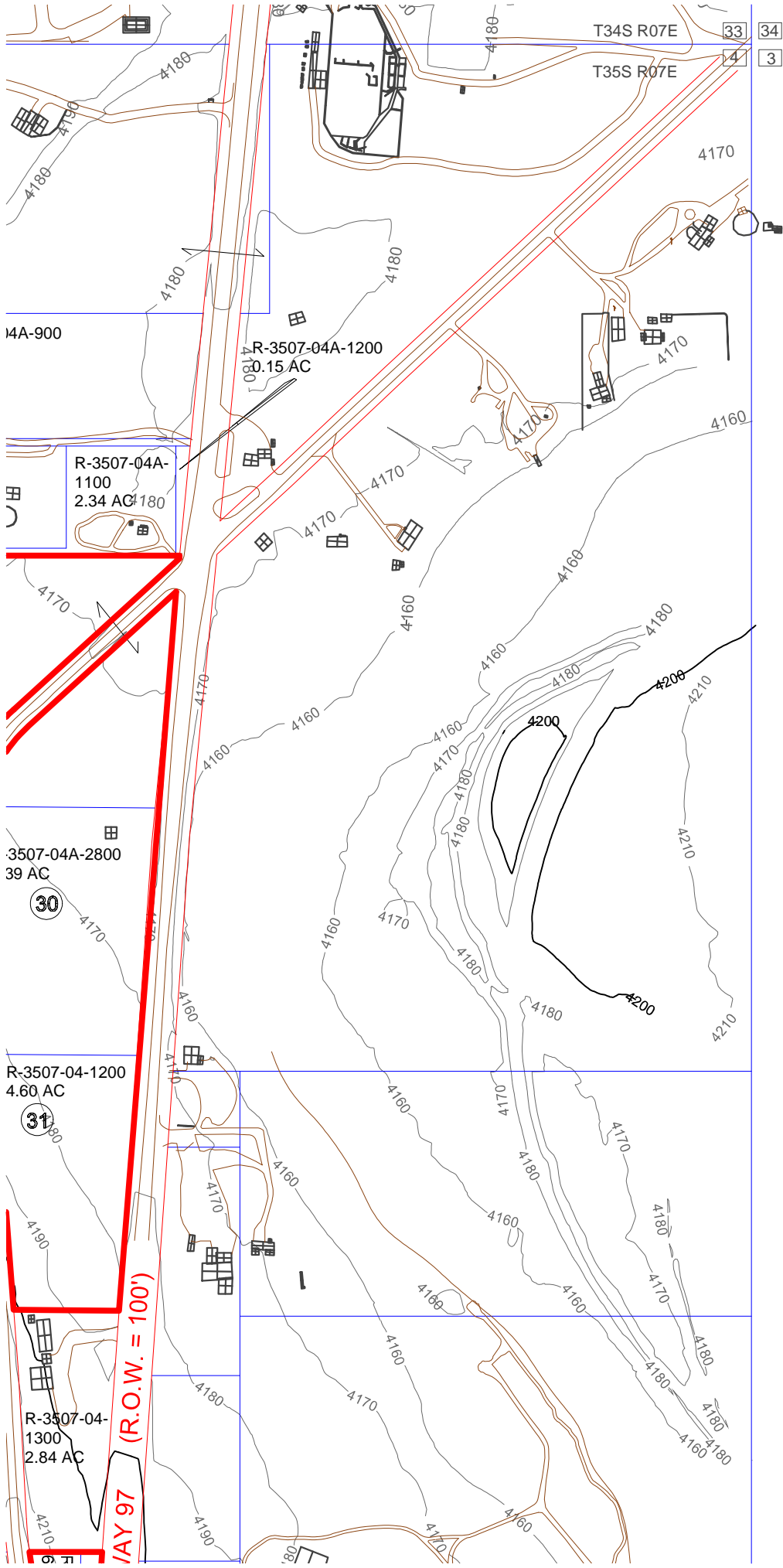
R-3507-1
1R RR AC

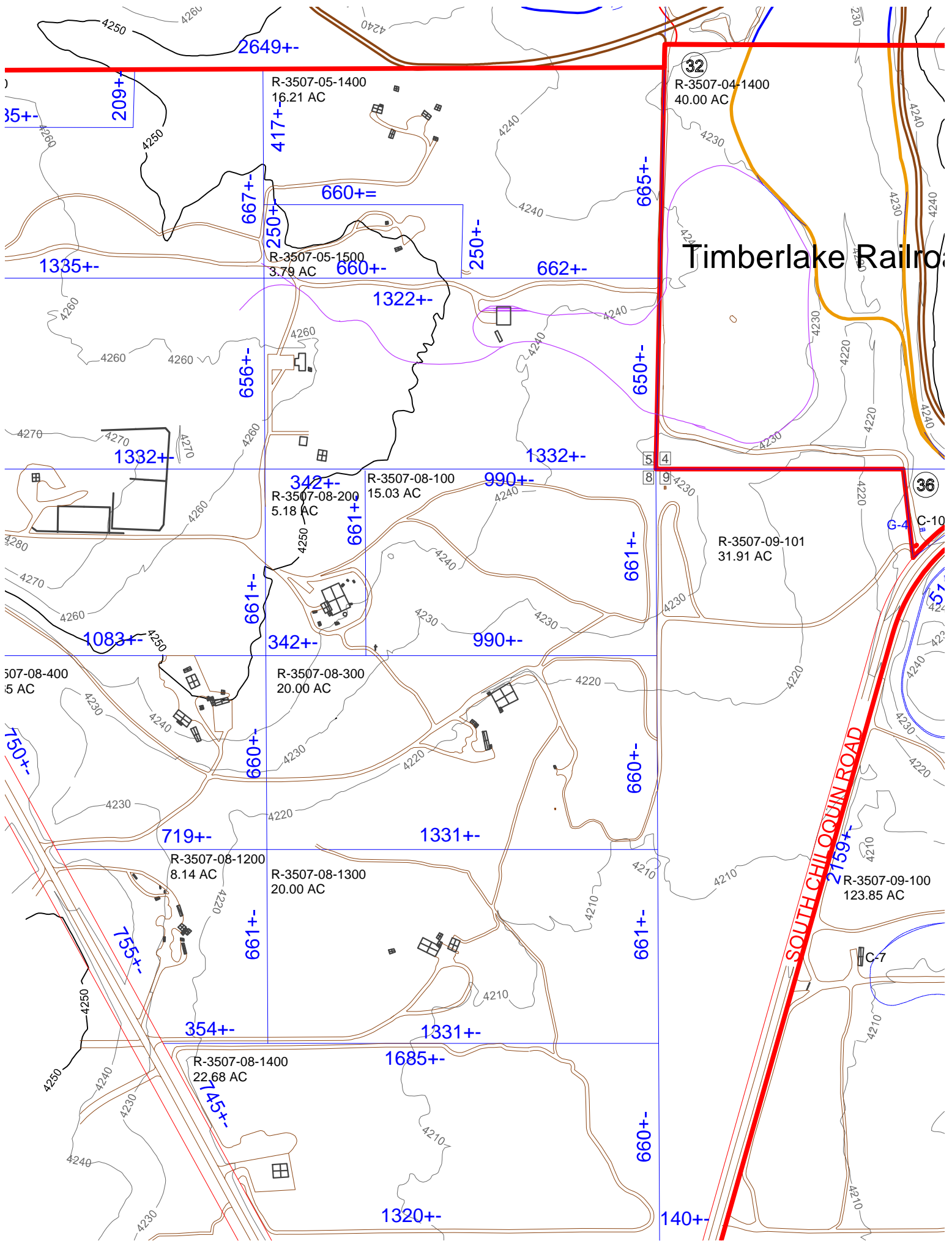






VAY 97 (R.O.W = 100')





Timberlake Railroad

SOUTH CHILOQUIN ROAD

32

36

G-4 C-10

C-7

ke Railroad

PHILOQUIN ROAD

HIGHWAY 91

