

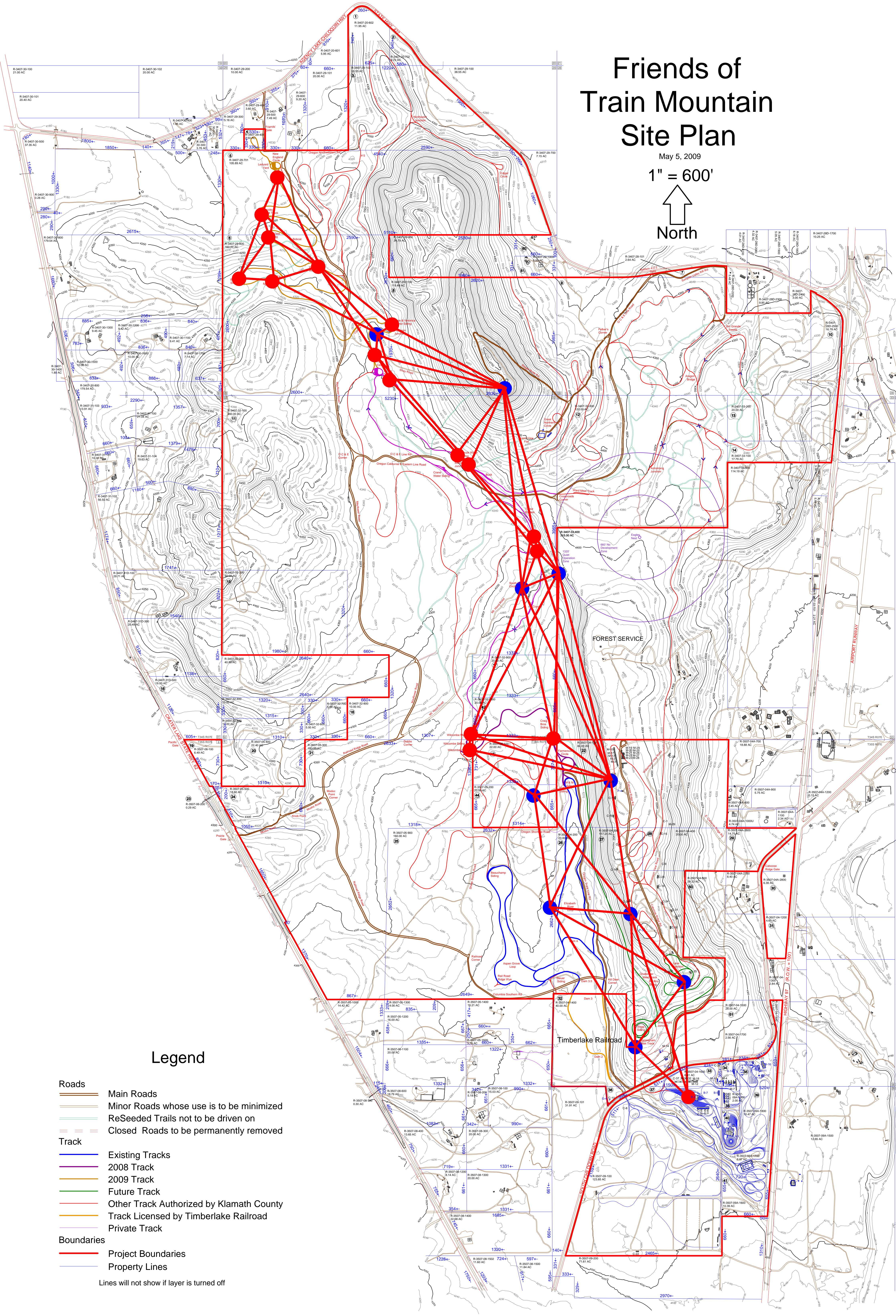
Friends of Train Mountain Site Plan

May 5, 2009

1" = 600'



North



Legend

- Roads**
 - Main Roads
 - Minor Roads whose use is to be minimized
 - ReSeeded Trails not to be driven on
 - Closed Roads to be permanently removed
 - Track**
 - Existing Tracks
 - 2008 Track
 - 2009 Track
 - Future Track
 - Other Track Authorized by Klamath County
 - Track Licensed by Timberlake Railroad
 - Private Track
 - Boundaries**
 - Project Boundaries
 - Property Lines
- Lines will not show if layer is turned off